



Friday 14th March 2025

---

*Dear all,*

*Thank you to the person who gave some really helpful feedback about the look of our newsletter in the recent community survey! I have taken your advice on how to make this newsletter easier to read and more accessible to all - I hope you like it and huge thanks for offering such positive feedback to us. We love to hear from people during those surveys and always consider everyone's thoughts on our school.*

**PUPIL SURVEY** - Just like with the family/parent survey, we want to hear what your children think too. It only takes a few minutes and the office has sent out a link for you to use. Please encourage your children to do this, with their own independent answers, so that we know what they think of school and how we can help them more.

**BOOK OF CURIOSITY** - See the poster in the next section of this newsletter and please encourage your children to take part. It's important to keep encouraging our children to write and they LOVE becoming published authors and seeing their stories printed in a real book! Anyone who enters will receive a free copy of the published book before break up for Summer. **ENTRIES HANDED IN AFTER THE 2-WEEK EASTER BREAK!**

**FRIDAY FOCUS DAY** - for Science is happening today! Lots of CURIOSITY and focus on science across the whole school for the whole day - I hope to have some lovely photos to share with you next week!

**RED NOSE DAY FOR COMIC RELIEF** - is coming up fast! Next Friday 21st, children can come to school wearing their red noses, a drawn-on red nose, a red top or anything related to Comic Relief! A small donation of whatever you can afford, towards this great charity, is really appreciated.

***Have a great weekend everyone!***

*Take care,*

*Emma Beardah*

*Headteacher*

[headteacher@walterhalls.nottingham.sch.uk](mailto:headteacher@walterhalls.nottingham.sch.uk)

---



## Spring 2 Home learning

### CURIOSITY!

#### GET READY FOR THE FOURTH EDITION OF...

**'Walter Halls Book of Curiosity: A collection of stories written by the children of Walter Halls'**

Over the last 3 years, lots of you became PUBLISHED AUTHORS! Who wants to take part this year? Let's make the fourth edition EVEN BETTER!

If you've got an adventure story inside you, just bursting to come out, you could see your story in print, inside a published book, available to buy and sitting on the shelves of our library!

All you need to do is write your own short story – type it, write it on paper, it's up to you! You might even want to illustrate it too? Here are the rules to follow that will help you:

- Your story can be about anything you like, as long as it's fun to read, adventurous and has some curiosity and excitement to it! Try writing it with a twist at the end or with a cliff-hanger that leaves people wondering!
- It should be a short story: between 2-4 A4 pages.
- It can be typed and printed out or it can be hand-written – but if you're writing it out, be sure to make it neat and use a pen if you can do.
- You can add illustrations if you want to, but you don't have to. Maybe a friend can help you?

**HAND IN TO MRS BEARDAH BY TUESDAY 22<sup>nd</sup> APRIL 2024 or email it to [headteacher@walterhalls.nottingham.sch.uk](mailto:headteacher@walterhalls.nottingham.sch.uk)**



## Ways to Communicate



---

*Please remember, we have several ways you can get in touch:*

---

- *Come and speak to us on the playgrounds in the morning or after school or go into the main office and arrange a phone call / meeting time*
- *Call the office on 0115 9150045 and ask for someone to call you back for a chat or to arrange a meeting*
- *Email our admin inbox - [admin@walterhalls.nottingham.sch.uk](mailto:admin@walterhalls.nottingham.sch.uk). PLEASE NOTE - this email box is not checked daily due to other workloads of staff in school and so if your enquiry is urgent please always call us instead*

- **Class Dojo** - *this is not for raising a problem or complaint. This is for teachers to share news and information. Teachers do not check Class Dojo after school hours and will not respond to complaints or problems this way*

- **Arbor** - *this is for whole school messages, bookings and payments, clubs etc.*
- 

---

**IF YOU NEED HELP GETTING ACCESS TO CLASS DOJO OR ARBOR PLEASE SPEAK TO OUR OFFICE TEAM**

---

**Nottingham City Council**  
**School Terms and Holidays Calendar - 2024/25**

Aug-24						
M		5	12	19	26	
T		6	13	20	27	
W		7	14	21	28	
T	1	8	15	22	29	
F	2	9	16	23	30	
S	3	10	17	24	31	
S	4	11	18	25		

Sep-24						
M		2	9	16	23	30
T		3	10	17	24	
W		4	11	18	25	
T		5	12	19	26	
F		6	13	20	27	
S		7	14	21	28	
S	1	8	15	22	29	

Oct-24						
M		7	14	21	28	
T	1	8	15	22	29	
W	2	9	16	23	30	
T	3	10	17	24	31	
F	4	11	18	25		
S	5	12	19	26		
S	6	13	20	27		

Nov-24						
M		4	11	18	25	
T		5	12	19	26	
W		6	13	20	27	
T		7	14	21	28	
F	1	8	15	22	29	
S	2	9	16	23	30	
S	3	10	17	24		

Dec-24						
M		2	9	16	23	30
T		3	10	17	24	31
W		4	11	18	25	
T		5	12	19	26	
F		6	13	20	27	
S		7	14	21	28	
S	1	8	15	22	29	

Jan-25						
M		6	13	20	27	
T		7	14	21	28	
W	1	8	15	22	29	
T	2	9	16	23	30	
F	3	10	17	24	31	
S	4	11	18	25		
S	5	12	19	26		

Feb-25						
M		3	10	17	24	
T		4	11	18	25	
W		5	12	19	26	
T		6	13	20	27	
F		7	14	21	28	
S	1	8	15	22		
S	2	9	16	23		

Mar-25						
M		3	10	17	24	31
T		4	11	18	25	
W		5	12	19	26	
T		6	13	20	27	
F		7	14	21	28	
S	1	8	15	22	29	
S	2	9	16	23	30	

Apr-25						
M		7	14	21	28	
T	1	8	15	22	29	
W	2	9	16	23	30	
T	3	10	17	24		
F	4	11	18	25		
S	5	12	19	26		
S	6	13	20	27		

May-25						
M		5	12	19	26	
T		6	13	20	27	
W		7	14	21	28	
T	1	8	15	22	29	
F	2	9	16	23	30	
S	3	10	17	24	31	
S	4	11	18	25		

Jun-25						
M		2	9	16	23	30
T		3	10	17	24	
W		4	11	18	25	
T		5	12	19	26	
F		6	13	20	27	
S		7	14	21	28	
S	1	8	15	22	29	

Jul-25						
M		7	14	21	28	
T	1	8	15	22	29	
W	2	9	16	23	30	
T	3	10	17	24	31	
F	4	11	18	25		
S	5	12	19	26		
S	6	13	20	27		

- Inset Days
- Bank Holiday
- School Holiday

- Half term 1 - 7 weeks 2 days
- Half term 2 - 7 weeks
- Half term 3 - 6 weeks
- Half term 4 - 6 weeks
- Half term 5 - 4 weeks 3 days
- Half term 6 - 8 weeks



**Nottingham City Council**  
**School terms and holiday calendar – 2025/26**

AUGUST 2025					SEPTEMBER 2025					OCTOBER 2025						
M	4	11	18	25	M	1	8	15	22	29	M	6	13	20	27	
T	5	12	19	26	T	2	9	16	23	30	T	7	14	21	28	
W	6	13	20	27	W	3	10	17	24	W	1	8	15	22	29	
T	7	14	21	28	T	4	11	18	25	T	2	9	16	23	30	
F	1	8	15	22	29	F	5	12	19	26	F	3	10	17	24	31
S	2	9	16	23	30	S	6	13	20	27	S	4	11	18	25	
S	3	10	17	24	31	S	7	14	21	28	S	5	12	19	26	

NOVEMBER 2025					DECEMBER 2025					JANUARY 2026						
M	3	10	17	24	M	1	8	15	22	29	M	5	12	19	26	
T	4	11	18	25	T	2	9	16	23	30	T	6	13	20	27	
W	5	12	19	26	W	3	10	17	24	31	W	7	14	21	28	
T	6	13	20	27	T	4	11	18	25	T	1	8	15	22	29	
F	7	14	21	28	F	5	12	19	26	F	2	9	16	23	30	
S	1	8	15	22	29	S	6	13	20	27	S	3	10	17	24	31
S	2	9	16	23	30	S	7	14	21	28	S	4	11	18	25	

FEBRUARY 2026					MARCH 2026					APRIL 2026					
M	2	9	16	23	M	2	9	16	23	30	M	6	13	20	27
T	3	10	17	24	T	3	10	17	24	31	T	7	14	21	28
W	4	11	18	25	W	4	11	18	25	W	1	8	15	22	29
T	5	12	19	26	T	5	12	19	26	T	2	9	16	23	30
F	6	13	20	27	F	6	13	20	27	F	3	10	17	24	
S	7	14	21	28	S	7	14	21	28	S	4	11	18	25	
S	1	8	15	22	S	1	8	15	22	29	S	5	12	19	26

MAY 2026					JUNE 2026					JULY 2026						
M	4	11	18	25	M	1	8	15	22	29	M	6	13	20	27	
T	5	12	19	26	T	2	9	16	23	30	T	7	14	21	28	
W	6	13	20	27	W	3	10	17	24	W	1	8	15	22	29	
T	7	14	21	28	T	4	11	18	25	T	2	9	16	23	30	
F	1	8	15	22	29	F	5	12	19	26	F	3	10	17	24	31
S	2	9	16	23	30	S	6	13	20	27	S	4	11	18	25	
S	3	10	17	24	31	S	7	14	21	28	S	5	12	19	26	

Key	
	In school
	School holiday
	Public holiday
	In Service Training Day

AUGUST 2026					
M	3	10	17	24	31
T	4	11	18	25	
W	5	12	19	26	
T	6	13	20	27	
F	7	14	21	28	
S	1	8	15	22	29
S	2	9	16	23	30

\*Recommend that July 27 be used as INSET Day (school's decision)

- Half term 1 – 7 weeks
- Half term 2 – 7 weeks
- Half term 3 – 6 weeks
- Half term 4 – 5 weeks
- Half term 5 – 5 weeks 4 days
- Half term 6 – 8 weeks 1 day

# A great OPAL uniform

We are pleased to advise that branded tracksuit bottoms\*, polo shirts and jumpers/cardigans, can all be ordered through the school office.

\*\* tracksuit bottoms can now be supplied with and without a logo via the school office. Note, that these uniform items are ordered half-terminly through our school wear supplier.



Heather Grey



Navy



Black



Light Blue



White



Plain trainers, or trainer-style shoe



Wellies (kept in school)  
Water-proofs: jacket with hood or puddle-suit (kept in school if possible)

### Other uniform options:



PE kit – to be worn to school on allocated PE days. We do not get children changed for PE during the school day.

- Sportswear suitable for outdoor sports activity – avoid large logos / expensive brands\*\*
- Trainers & socks

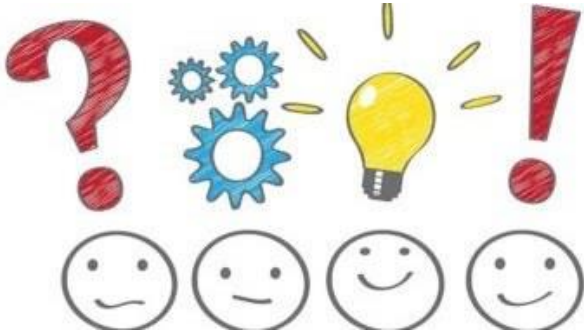
\*\*As long as PE kit looks suitable for doing sporting activities, we are not specific about exactly what it should be. Children must be in trainers for PE. Affordable suggestions would be: plain t-shirts, plain tracksuit bottoms or sports leggings, zip-up hoodie for warmth in colder months.

*If children are wearing a really great OPAL uniform, this would also work for PE, so long as proper trainers are worn that day.*

Walter Halls in an OPAL school. You can find out more about OPAL here: <https://outdoorplayandlearning.org.uk/parents/>



Escalating problems or incidents



## Are you worried about your child?

Is something happening in school with your child that you need to talk to someone about?

1) **FIRST STEP** is to talk to their teacher. Teachers can't chat for long before school and sometimes they have to attend meetings after school. If you need a chat, ask at the office for a call back from the teacher asap  
CLASS DOJO is not to be used to raise a problem or worry.  
Teachers do not check messages on Dojo regularly nor should they be responding to you after working hours via Dojo

2) **NEXT STEP** if you're still upset or worried and things haven't got better, ask to speak with the Assistant Head for your child's year group

3) **LAST STEP** if remain unhappy with actions taken, please call into the office and ask for our Deputy Head or Headteacher to call you

We are all working really hard to look after lots of children and families. We won't always be able to chat to you straight away but we do care about making sure children are happy and safe at school.

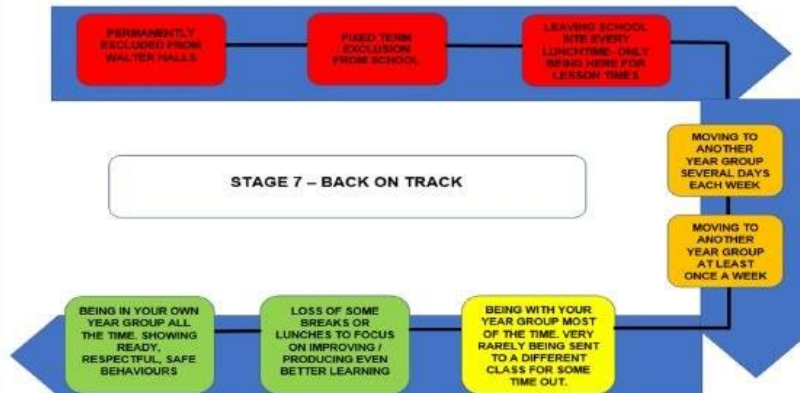
The next pages of this poster shows you how we escalate incidents of negative behaviour and who gets involved and when. We have lots of people at Walter Halls whose job it is to make behaviour as positive as possible – but our children are all still young and need help to learn these things over time. If you feel like a problem isn't changing quickly, quite often this isn't because we're not doing anything about it. Some children need lots of help to change behaviours and this takes lots of time and effort from different adults.

# R2R10

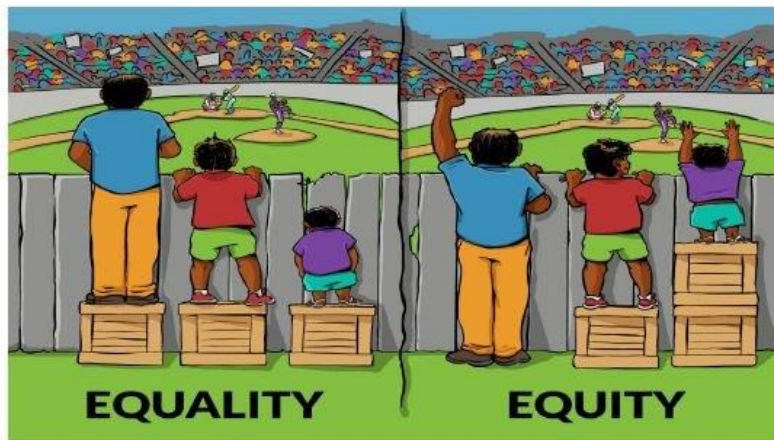
1	<b>R</b> Reminder from the adult	We all need reminders about our 3 school rules sometimes: <b>Ready?</b> <b>Respectful?</b> <b>Safe?</b>	
2	<b>2</b> 2 minutes owed	<b>You will</b> spend 2 minutes of your free time with an adult discussing why your <b>behaviours</b> aren't RRS  <b>The adult will</b> explain this clearly to you and help you make changes	
3	<b>R</b> Reminder from the adult	If this <b>behaviour</b> carries on the adult will give you just one more reminder.	
4	<b>10</b> 10 minutes owed	<b>You will</b> spend 10 minutes of your free time with an adult discussing why your <b>behaviours</b> aren't RRS and put right what has gone wrong  <b>The adult will</b> explain this clearly to you and help you make changes. They might give you a task to do to help you put things right	
5	<b>TIME OUT</b> - A short amount of time away from everyone - OR a longer amount of time needed away from everyone All the adults will decide how long is needed based on what has happened. (Learning mentor/Phase leader / deputy head stage)	<b>You will</b> be taken by a different adult to spend time away from your year group  <b>The adult will</b> RECORD this in the <b>behaviour</b> log, arrange where you will spend your hour, <b>organise</b> a restorative conversation	<b>UNSAFE BEHAVIOURS MOVE STRAIGHT TO STAGE 5/6/7:</b> - Verbal with intent to harm - Physical harm - Racial - Homophobic - Bullying  All the adults can decide which stage your <b>behaviour</b> should go to, depending on the circumstances.  At all times this is RECORDED and contact with home is made.
6		<b>The adults will</b> call home the same day if your <b>behaviours</b> are repeated or unsafe. Adults at home will receive a letter to keep them updated at the end of term and may be invited in	
7	<b>Headteacher adults at home and outside help needed</b>	<b>BACK ON TRACK PATHWAY NEEDED</b> - 'Team around' meeting considered - Face-to-face meeting with outside adults - Regular review of support	

Repeated unsafe behaviours will always be dealt with by senior leaders, on a STAGE 7 plan. You can see more about STAGE 7 on the next

**GETTING BACK ON-TRACK** – The adults will be keeping track of where you are and where you need to be:



Walter Halls believes in **EQUITY** over **EQUALITY**. Everyone needs different things, not the same. Some children and families need more help than others. That's why Walter Halls has a full-time family support worker, a full-time play therapist, two full-time behaviour mentors and lots of staff who believe in helping children with challenging behaviours. We do lots of things to help before we ever reach Stage 7 or excluding children from school.





## KEY DATES COMING UP...



---

### **STILL TO COME IN SPRING TERM:**

---

- **Friday 21st March - RED NOSE DAY** - You can purchase a red nose from our school office but get in quick before they sell out! Children can wear their red noses, draw on a red nose, wear something red for the day or something related to Comic Relief. We'd appreciate a small donation of whatever you can afford to pass to this amazing charity!
  - **Wednesday 26th March - Y2 RE performance** - All about Passover - 9am School Hall
  - **Monday 31st March - Headteacher Certificate Assembly** for Y1-Y6 - 9am School Hall - families of children receiving an award will be contacted ahead of time to invite you to come and watch. F1 & F2 certificates are presented separately in their classrooms that week.
  - **APRIL is AUTISM AWARENESS MONTH** - We will be spending time teaching our children about neurodiversity and acceptance of differences in each other
    - **Friday 4th April - last day of term - School closes for 2 weeks**
  - **Tuesday 21st April school re-opens for summer term (Monday 20th is a Bank Holiday)**
    - **INSET DAYS STILL TO COME THIS ACADEMIC YEAR - 6th June, 24th & 25th July**
-

Hi, I'm  
Chloe



I am your schools assigned  
Education Mental Health  
Practitioner (EMHP).

I support young people to  
understand how they are  
feeling, achieve their goals  
and learn coping strategies.



I love Country music,  
theatre, craft activities,  
yoga and hiking. I enjoy  
baking, but always make  
a huge mess!  
Come and have a chat :)

Scan me to find out more about MHST!



## Our Core Value Learning this term is...



---

### *CURIOSITY*

---

- *People who changed the world.*
- *Wonders of the world & other worlds (sea, space, sky, science, technology).*
  - *Research skills and independent projects.*
  - *Famous inventions and inventors.*
- *Asking questions – always be a questioner!*
- *Trying something new – bravery and courage.*

- Overcoming fears.

---

*As always, your help with talking to your children about this learning is appreciated*

---

## Attendance!



# Attendance Matters



---

*As a school, we strive for 100% attendance! Anything 96% or more is good attendance and will mean that your children are thriving in school and making good progress with their learning.*

*We have an attendance team who help support anyone who is struggling with good school attendance and we contact families ourselves if we notice concerns connected with your children's attendance at school.*

*We know that attendance is not in the control of primary-aged children. We still 'recognise' the importance of attendance with all of our children by sharing with them what attendance percentages were in every year group. We celebrate different types of 'good' attendance, for example 'most improved' and those children who have managed to get to school on time, when in the past this may have been a struggle for them and their families.*



*We report attendance for the previous week:*

**LAST WEEK, WHOLE SCHOOL ATTENDANCE WAS:**

**THE CLASS WITH THE HIGHEST PERCENTAGE WAS:**

**ALSO DOING GREAT WERE:**

*Our target this year is 96+% and we aim to reduce our persistent absentee figures to just 15%*

---

## Community & Family Support



---

### **FRIENDS OF WALTER HALLS PTA GROUP:**

*This year's fundraising will be put towards visits, trips and experiences for all of our year groups. We do not have enough budget to support the costs of visits and experiences and we use any fundraising to help make sure no child misses out. Keep an eye-out on Class Dojo for our next fundraising event...*

### **FAMILY SUPPORT AND PASTORAL CARE:**

*We invest a lot in the wider support of our families and have a big team of staff who look after those who need a bit more help and support. Food parcels, referrals to other services in Nottingham, parenting and behaviour support. Here are a few people who may be able to help you - please let us know if you want to chat to us -*

**EMMA BEARDAH** - Headteacher and overall safeguarding leader

*JO GLOVER - Deputy Head, safeguarding team & SENDCO*

*GAIL HOLMES - Family Support Worker and DSL*

*KERRIE CHANDLER - Play Therapist, Child Welfare Officer, Deputy DSL*

*LEE NEAL & KATIE MERRINGTON-INGLEY - Behaviour & Learning Mentors*

*CHLOE ORVIS - MHST (Mental Health Support Team) - Available on school site on Wednesday's  
8.30am-9.15am for parent drop-in sessions*

---

## **OPAL PLAY UPDATE**



---

*We are officially a 'PLATINUM AWARD' OPAL SCHOOL! Awarded the highest grade for our  
OPAL development work in February 2025.*

*Lots of hard work has paid-off and most importantly, our children's play literacy and happiness  
during lunchtimes has transformed in that short space of time. We continue to build on this  
success with a long-term OPAL strategy, which you can find on our website.*

*We have recently updated our website with lots more OPAL information:*

*[https://www.walterhallsprimary.co.uk/web/outdoor\\_play\\_and\\_learning\\_opal/704559](https://www.walterhallsprimary.co.uk/web/outdoor_play_and_learning_opal/704559)*

*If you have any questions or feedback about OPAL please contact school for a chat with one of our OPAL leaders.*

---

## **Easy Fundraising APP**



---

***EVERY TIME YOU SHOP ONLINE YOU COULD HELP OUR LOVELY SCHOOL!***

*By joining the Easy Fundraising scheme and downloading the APP to use when you shop online, we could receive a small donation towards our school. We use these donations to help pay for school visits and experiences for our children.*

*From take-aways to holidays, lots of companies are part of this scheme to help support a local cause.*

*Simply go to:*

*[https://www.easypfundraising.org.uk/causes/walterhallsprimaryschool/?utm\\_campaign=raise-more](https://www.easypfundraising.org.uk/causes/walterhallsprimaryschool/?utm_campaign=raise-more)*

*PLEASE TELL ALL YOUR FRIENDS AND FAMILIES TOO - it's so simple to use but means so much to what we can afford to do for our children in school!*

*We currently have 167 supporters...can we make it to 200?*

***THANK YOY FOR YOUR HELP!***

---

## The Little Ted Foundation



---

*Walter Halls continues to be a support of this amazing charity - one very close to our hearts, after the sad passing of Mr Neal's youngest child, Ted. We will continue to raise money whenever and wherever we can to help terminally ill children. You can help too, by visiting:*

*<https://www.thelittletedfoundation.org/>*

---

## Safety & Conduct on School Site





---

**PLEASE HELP US TO BE A HEALTHY AND HAPPY SCHOOL BY FOLLOWING THESE SIMPLE REQUESTS:**

**Illness** - we want all of our children in school every day, even with minor coughs and colds. If your child has a stomach bug they should remain off school for 48 hours from the last time they vomited to stop the spread of illness in school. If your child has a different kind of illness and you're not sure if they should be in school or not, the NHS website has lots of great advice and our office team can also help you.

**Parking** - please be considerate, respectful and safe if using a car to come to and from school in. Road safety is very important, as is the happiness and respect shown towards local residents. The local authority discourages car use and parking in their inner-city schools and we do not have a car park to use. Staff parking is paid for by staff who choose to use this very small space.

**Dogs, bikes and scooters** - We love all of these things but our school site is a busy place with lots of young children on it. Dogs are not permitted on school site at any time, even when on a lead, so please make plans to leave them at home if you're doing the school run. Bikes and scooters should not be ridden inside the school grounds - please dismount and push them along with you.

**PE kits** - should be worn to school on your child's PE days. Children do not get changed into PE kits during the school day. Please check with your child's teacher which days they need to come ready for PE. Our school uniform supports outdoor play at any time of the day and could also be suitable for PE lessons, so long as proper trainers are worn for PE lessons.

**General conduct from all adults on school property** - we set high standards for this. School is private property and the local authority will act to ensure that all adults who come onto this property behave in a respectful manner. We have systems of escalation in place for those who struggle to behave respectfully on school property and will ban anyone from our site for repeated incidents of poor conduct. Please do not gather on our school site after school hours - we know we have beautiful grounds but we also have a duty to safeguard our children who attend after school clubs, closing gates and securing the site again 10 minutes after the end of the school day.

---