



Friday 9th January 2026

Dear all,

Welcome back and HAPPY NEW YEAR! I hope that you've managed to have some lovely family time during the two-week break.

It's been so lovely to have everyone back together again, if a little bit of a chilly start for us all! I'm sure I'm not the only one struggling to get out of bed in the dark and cold! Spring term is still my favourite, as we see the changing seasons and our children are far more settled in their year groups - we usually see some amazing progress in learning this term because of this.

Listening to your views - I usually seek feedback from families during Spring term, in the form of an online survey. Please look out for this being sent out later this term. The more people that fill the feedback in, the more helpful this is to making changes and understanding your views. I will be seeking feedback from children too, but this year I'll capture this during the school day rather than an online form, so that I get a higher level of responses than last year. Summaries of this feedback are always shared with our families and will continue to do this. I've placed some pupil feedback I gathered last term, on our website here:

<https://www.walterhallsprimary.co.uk/web/feedback/642700>

Please take a look when you have a few minutes to spare.

Use of Class Dojo - I want to remind everyone again, at the start of a new term, that Class Dojo is not to be used as a communication tool for raising complaints or highlighting problems between you or to staff. Talking to adults in school, preferably in person or via the telephone, is what we expect to happen at Walter Halls and is a much more positive and respectful way to resolve issues. I've asked all our staff to remember this too and to discourage Class Dojo messaging that is done inappropriately. I do not expect any staff member to respond to problems and complaints using Class Dojo.

I've moved the 'Ways to Communicate' section of the newsletter to the start of this edition as a reminder of some of these expectations - please take another read

Happy news - Mrs Keeble, our lovely teaching assistant who left on maternity leave in December, has shared some gorgeous pictures of her new addition to the family! Please take a look...

New faces around school - I explained in the final newsletter of last term that we have some new staff members in school from this term onwards. I've added some photos of them into this newsletter to help you get to know them...

Key dates this term - lots happening! Please take a look at the list so you know what's happening...

Thank you for your continued support. Have a lovely weekend everyone!

Emma Beardah

Headteacher

headteacher@walterhalls.nottingham.sch.uk

HAPPY NEWS!



Welcome to the world, Ellis James Keeble was born Friday 2nd January weighing 8lb 10oz! We were so happy to hear from Mrs Keeble at the end of the Christmas break and to know that everyone is healthy and happy!



New faces around school...



1 - Alex Lloyd is our new Teaching Assistant in F2



2 - Yacine Blair is our new Teaching Assistant in Y5/6, covering Mrs Keeble's maternity leave



3 - Morgan is one our new Play Team members



4 - Nyeema has also joined the Play Team and is a former student of Walter Halls!

Ways to Communicate



Please remember, we have several ways you can get in touch:

- ***Come and speak to us** on the playgrounds in the morning or after school or go into the main office and arrange a phone call / meeting time*
- ***Call the office on 0115 9150045** and ask for someone to call you back for a chat or to arrange a meeting*
- ***Email our admin inbox** - admin@walterhalls.nottingham.sch.uk. PLEASE NOTE - this email box is not checked daily due to other workloads of staff in school and so if your enquiry is urgent please always call us instead*

- **Class Dojo** - this is not for raising a problem or complaint. This is for teachers to share news and information. Teachers do not check Class Dojo after school hours and will not respond to complaints or problems this way
- **Arbor** - this is for whole school messages, bookings and payments, clubs etc.

IF YOU NEED HELP GETTING ACCESS TO CLASS DOJO OR ARBOR PLEASE SPEAK TO OUR OFFICE TEAM



THE LIME TREES

**Holiday Club
bookings open
for February half term**

Nottingham City Council
School terms and holiday calendar – 2025/26

AUGUST 2025						
M		4	11	18	25	
T		5	12	19	26	
W		6	13	20	27	
T		7	14	21	28	
F	1	8	15	22	29	
S	2	9	16	23	30	
S	3	10	17	24	31	

SEPTEMBER 2025						
M	1	8	15	22	29	
T	2	9	16	23	30	
W	3	10	17	24		
T	4	11	18	25		
F	5	12	19	26		
S	6	13	20	27		
S	7	14	21	28		

OCTOBER 2025						
M		6	13	20	27	
T		7	14	21	28	
W	1	8	15	22	29	
T	2	9	16	23	30	
F	3	10	17	24	31	
S	4	11	18	25		
S	5	12	19	26		

NOVEMBER 2025						
M		3	10	17	24	
T		4	11	18	25	
W		5	12	19	26	
T		6	13	20	27	
F		7	14	21	28	
S	1	8	15	22	29	
S	2	9	16	23	30	

DECEMBER 2025						
M	1	8	15	22	29	
T	2	9	16	23	30	
W	3	10	17	24	31	
T	4	11	18	25		
F	5	12	19	26		
S	6	13	20	27		
S	7	14	21	28		

JANUARY 2026						
M		5	12	19	26	
T		6	13	20	27	
W		7	14	21	28	
T	1	8	15	22	29	
F	2	9	16	23	30	
S	3	10	17	24	31	
S	4	11	18	25		

FEBRUARY 2026						
M		2	9	16	23	
T		3	10	17	24	
W		4	11	18	25	
T		5	12	19	26	
F		6	13	20	27	
S		7	14	21	28	
S	1	8	15	22		

MARCH 2026						
M		2	9	16	23	30
T		3	10	17	24	31
W		4	11	18	25	
T		5	12	19	26	
F		6	13	20	27	
S		7	14	21	28	
S	1	8	15	22	29	

APRIL 2026						
M		6	13	20	27	
T		7	14	21	28	
W	1	8	15	22	29	
T	2	9	16	23	30	
F	3	10	17	24		
S	4	11	18	25		
S	5	12	19	26		

MAY 2026						
M		4	11	18	25	
T		5	12	19	26	
W		6	13	20	27	
T		7	14	21	28	
F	1	8	15	22	29	
S	2	9	16	23	30	
S	3	10	17	24	31	

JUNE 2026						
M	1	8	15	22	29	
T	2	9	16	23	30	
W	3	10	17	24		
T	4	11	18	25		
F	5	12	19	26		
S	6	13	20	27		
S	7	14	21	28		

JULY 2026						
M		6	13	20	27	
T		7	14	21	28	
W	1	8	15	22	29	
T	2	9	16	23	30	
F	3	10	17	24	31	
S	4	11	18	25		
S	5	12	19	26		

Key	
	In school
	School holiday
	Public holiday
	In Service Training Day

AUGUST 2026						
M		3	10	17	24	31
T		4	11	18	25	
W		5	12	19	26	
T		6	13	20	27	
F		7	14	21	28	
S	1	8	15	22	29	
S	2	9	16	23	30	

*Recommend that July 27 be used as INSET Day (school's decision)

Half term 1 – 7 weeks

Half term 2 – 7 weeks

Half term 3 – 6 weeks

Half term 4 – 5 weeks

Half term 5 – 5 weeks 4 days

Half term 6 – 8 weeks 1 day

KEY DATES COMING UP...



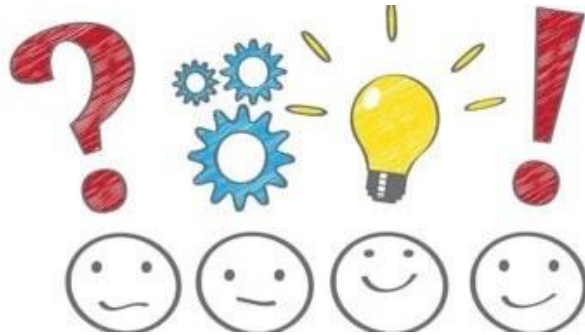
OUR CORE VALUES LEARNING IN SPRING TERM IS ASPIRATION AND CURIOSITY

- **MONDAY 5TH JANUARY – SCHOOL RE-OPENS FOR ALL CHILDREN**
- **FRIDAY CELEBRATION ASSEMBLIES START WITH Y4/5/6 ON FRIDAY 9TH JANUARY AND ALTERNATE WITH Y1/2/3 WEEKLY**
- **W/C 12TH JANUARY – Year 5 will be doing their ‘Values in the Community’ project, linked to Aspiration. They will be reading to other children in the local library and leaving book reviews for others to look at in the library too.**
- **w/c 19th JANUARY – We have a special visitor to our Assembly all about Aspiration. Leila from Y6 has an uncle who presents on Sky News! He’s coming in to chat to our children and meet Year 6 to talk about this theme with them.**
- **Friday 6th February – Friday Focus Day for Maths. More information to follow...**
- **w/c Children’s Mental Health Week. National theme is ‘This is my place: a sense of belonging’. We will be teaching about this important theme with all of our children during our lessons this week**
- **Tuesday 10th February – Safer Internet Day. National theme is ‘Smart Tech, Safe Choices: sensible use of AI’. We will also be doing more with our improvements to become a ‘smart phone-free school’**
- **Wednesday 11th February – YEAR 5 will be performing their RE learning to their families. This will be all about Sikhism. 9am in the hall – Y5 families, please come along!**

- *FRIDAY 13TH FEBRUARY – SCHOOL CLOSSES FOR HALF TERM*
- *Monday 23rd February – School re-opens for Spring 2 term*
- *w/c 23rd February – Launch of our Walter Halls Book of Curiosity!*
- *F1, Nursery, will be starting their ‘Values in the Community’ project by making bookmarks to give to a local care home*
- *Thursday 6th March – WORLD BOOK DAY! More details to follow...On Thursday 12th we will have a special visiting author coming in to meet all of our children too!*
- *Friday 13th March – FRIDAY FOCUS DAY for Science. National Theme for British Science Week is ‘Curiosity – what is your question’. All of our year groups will be doing science and curiosity learning all day long!*
- *w/c 16th March – we will introduce Autism Awareness month in our assembly, which starts in April during the Easter Break.*
- *Monday 23rd March – 9am, school hall. HEADTEACHER EXCELLENCE ASSEMBLY. End of term certificates and red carpet ceremony*
- *Y3 will be doing their ‘Values in the Community’ project connected with our Curiosity learning, this final week of term. They will be singing some songs to residents of a local care home.*
- *Wednesday 25th March, 9am School Hall – Year 2 will be performing their RE learning. This will be all about the Jewish faith and Passover.*
- *Friday 27th March – School closes for Easter break and re-opens on Monday 13th April*

Our remaining INSET days, when school closes for training days, are: Monday 1st June, Friday 24th July and Monday 27th July.

WHO CAN HELP ME? Escalating problems or incidents



Are you worried about your child?


Is something happening in school with your child that you need to talk to someone about?

- 1) **FIRST STEP** is to talk to their teacher. Teachers can't chat for long before school and sometimes they have to attend meetings after school. If you need a chat, ask at the office for a call back from the teacher asap
CLASS DOJO is not to be used to raise a problem or worry.
Teachers do not check messages on Dojo regularly nor should they be responding to you after working hours via Dojo
- 2) **NEXT STEP** if you're still upset or worried and things haven't got better, ask to speak with the Assistant Head for your child's year group. It might also be the SENDCO you need to chat to – Mrs Goldsmith
- 3) **LAST STEP** if remain unhappy with actions taken, please call into the office and ask for our Headteacher to call you

We are all working really hard to look after lots of children and families. We won't always be able to chat to you straight away but we do care about making sure children are happy and safe at school.

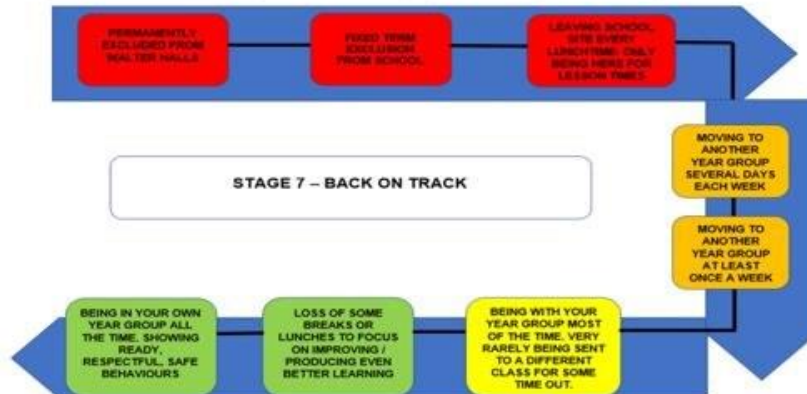
The next pages of this poster shows you how we escalate incidents of negative behaviour and who gets involved and when. We have lots of people at Walter Halls whose job it is to make behaviour as positive as possible – but our children are all still young and need help to learn these things over time. If you feel like a problem isn't changing quickly, quite often this isn't because we're not doing anything about it. Some children need lots of help to change behaviours and this takes lots of time and effort from different adults.

R2R10

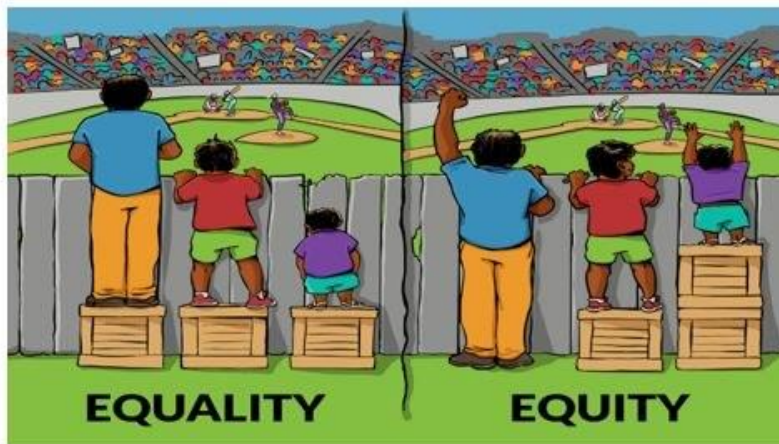
1	R Reminder from the adult	We all need reminders about our 3 school rules sometimes: <u>Ready?</u> <u>Respectful?</u> <u>Safe?</u>	
2	2 2 minutes owed	<u>You will</u> spend 2 minutes of your free time with an adult discussing why your behaviours aren't RRS <u>The adult will</u> explain this clearly to you and help you make changes	
3	R Reminder from the adult	If this behaviour carries on the adult will give you just one more reminder.	
4	10 10 minutes owed	<u>You will</u> spend 10 minutes of your free time with an adult discussing why your behaviours aren't RRS and put right what has gone wrong <u>The adult will</u> explain this clearly to you and help you make changes. They might give you a task to do to help you put things right	
5	TIME OUT - A short amount of time away from everyone - OR a longer amount of time needed away from everyone	<u>You will</u> be taken by a different adult to spend time away from your year group <u>The adult will</u> RECORD this in the behaviour log, arrange where you will spend your hour, organise a restorative conversation	UNSAFE BEHAVIOURS MOVE STRAIGHT TO STAGE 5/6/7: <ul style="list-style-type: none"> - Verbal with intent to harm - Physical harm - Racial - Homophobic - Bullying All the adults can decide which stage your behaviour should go to, depending on the circumstances. At all times this is RECORDED and contact with home is made.
6	All the adults will decide how long is needed based on what has happened. (Learning mentor/Phase leader / deputy head stage)	<u>The adults will</u> call home the same day if your behaviours are repeated or unsafe. Adults at home will receive a letter to keep them updated at the end of term and may be invited in	
7	Headteacher adults at home and outside help needed	'BACK ON TRACK' PATHWAY NEEDED - Team around meeting considered - Face-to-face meeting with outside adults - Regular review of support	

Repeated unsafe behaviours will always be dealt with by senior leaders, on a STAGE 7 plan. You can see more about STAGE 7 on the next

GETTING BACK ON-TRACK – The adults will be keeping track of where you are and where you need to be:



Walter Halls believes in **EQUITY** over **EQUALITY**. Everyone needs different things, not the same. Some children and families need more help than others. That's why Walter Halls has a full-time family support worker, a full-time play therapist, two full-time behaviour mentors and lots of staff who believe in helping children with challenging behaviours. We do lots of things to help before we ever reach Stage 7 or excluding children from school.



Our Senior Leaders...



Emma Beardah
Headteacher



Sarah Wright
Assistant Head EY & KS1



Hannah Pope
Assistant Head KS2

Our new SENDCO, Brit Goldsmith...



Community & Family Support



FRIENDS OF WALTER HALLS PTA GROUP:

All of our fundraising will be put towards visits, trips and experiences for all of our year groups. We do not have enough budget to support the costs of visits and experiences and we use any fundraising to help make sure no child misses out. Keep an eye-out on Class Dojo for our next fundraising event...

FAMILY SUPPORT AND PASTORAL CARE:

We invest a lot in the wider support of our families and have a big team of staff who look after those who need a bit more help and support. Food parcels, referrals to other services in Nottingham, parenting and behaviour support. Here are a few people who may be able to help you - please let us know if you want to chat to us -

EMMA BEARDAH - Headteacher and overall safeguarding leader

BRIT GOLDSMITH - SENDCO

GAIL HOLMES - Family Support Worker and DSL

KERRIE CHANDLER - Play Therapist, Child Welfare Officer, Deputy DSL

LEE NEAL & KATIE MERRINGTON-INGLEY - Behaviour & Learning Mentors

CHLOE ORVIS - MHST (Mental Health Support Team) - Available on school site on Wednesday's
8.30am-9.15am for parent drop-in sessions

ACTIVE UNIFORM!



We promote an 'Active Uniform' approach and have recently joined a national campaign to support children wearing uniform that is appropriate. We believe that all school uniform should be suitable for a busy, outdoor and active day at school, as well as a uniform that is comfortable, affordable and supports sensory needs too.

*The video on the Active Uniform Alliance website, summarises this perfectly:
<https://activeuniform.org/>*

KEY ELEMENTS OF OUR UNIFORM ARE:-

- *If you have a good 'active uniform on, you DO NOT NEED A DIFFERENT PE KIT.*
 - *A great OPAL uniform, along with some decent trainers, works well for all occasions at school- We still want uniform colours - blue or white tops. BLUE IS EASIER TO KEEP CLEAN!*
 - *NO LOGOS - all of our uniform is plain and shouldn't promote branded items.*
 - *WATERPROOFS AND WELLIES are part of our uniform. All children must have these at all times because we are an OPAL school and will go outside in all weathers.*
 - *A good pair of plain coloured trainers can double up as normal day school shoes AND outdoor PE shoes. Children might go outside for their learning at any given time - a decent pair of trainers is a must. PLEASE NO CROCS, HEELS OR FLIMSY SHINY SHOES - they will get mucky!*
 - *You can see from the pictures on our uniform poster that there is also a good degree of choice and ideas for children who still want to dress in a more traditional uniform too.*
 - *Our office team can always help with purchasing certain items and out uniform policy - on our website - signposts you to very affordable places to buy these items.*
-

Thank you for your support.

PLEASE LABEL ALL UNIFORM AND FOOTWEAR WITH YOUR CHILD'S NAME



Walter Halls is an OPAL school. You can find out more about OPAL here: <https://outdoorplayandlearning.org.uk/parents/>

ESSENTIAL UNIFORM REQUIREMENTS:

WHAT A GREAT OPAL SCHOOL UNIFORM WOULD LOOK LIKE:

- Plain tracksuit bottoms or plain full-length leggings – blue / grey / black
- Plain tracksuit-style shorts or plain cycling shorts – blue/ grey / black (for warmer weather)
- Blue or white polo shirt – blue is easier to keep clean!
- Plain blue jumper / hoodie / cardigan (or branded Walter Halls – see below)
- Socks (with some spares in their bag!)
- Plain trainers or trainer-style shoe
- Wellies (kept in school)
- Water-proofs: jacket with hood or puddle-suit (kept in school if possible)



PE kit:

If you have a great OPAL uniform, and a plain pair of trainers, you DON'T NEED a different PE kit!

- A great OPAL uniform is a great PE kit – having a pair tracksuit bottoms and tracksuit shorts to swap between, based on the weather, will help
- Plain black, blue or grey leggings could be worn instead
- Trainers & socks – no logos, keep trainers as plain, dark colours

Other options:

An active OPAL-style uniform is our preference and matches an active day at school. You can also choose the following, but would need a different PE kit as listed above:

- Grey trousers or skirt (with tights or socks)
- Grey pinafore dress or blue gingham summer dress (with tights or socks)
- Branded Walter Halls jumper or cardigan
- Black school shoes / slip-ons (no high-heels/wedged heels, flip-flops or crocs)

Some children like wearing a traditional uniform – like a summer pinafore dress – but will wear plain leggings or cycling shorts underneath to help them be active and when they are playing outside



Attendance!



Attendance Matters



As a school, we strive for 100% attendance! Anything 96% or more is good attendance and will mean that your children are thriving in school and making good progress with their learning.

We have an attendance team who help support anyone who is struggling with good school attendance and we contact families ourselves if we notice concerns connected with your children's attendance at school.

We know that attendance is not in the control of primary-aged children. We still 'recognise' the importance of attendance with all of our children by sharing with them what attendance percentages were in every year group. We celebrate different types of 'good' attendance, for example 'most improved' and those children who have managed to get to school on time, when in the past this may have been a struggle for them and their families.

We report attendance for the previous week. For the final week of Autumn term:

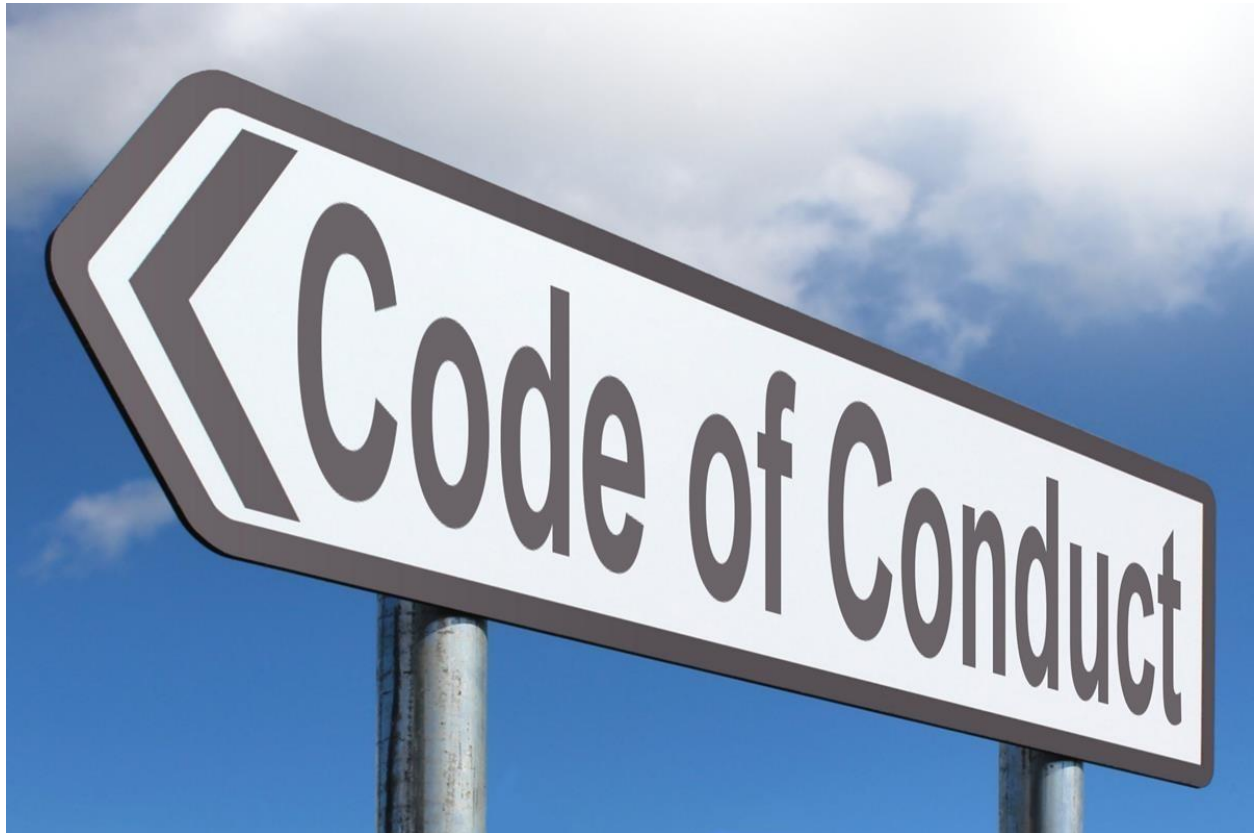
WHOLE SCHOOL ATTENDANCE WAS: 91.1%

THE CLASS WITH THE HIGHEST PERCENTAGE WAS: Class 3B with a brilliant 100%!

ALSO DOING GREAT WERE: Class 1A with 96% and Class 4B with 96.4%!

Our target this year is 96+% and we aim to reduce our persistent absentee figures to just 15%

Safety & Conduct on School Site



PLEASE HELP US TO BE A HEALTHY AND HAPPY SCHOOL BY FOLLOWING THESE SIMPLE REQUESTS:

Illness - we want all of our children in school every day, even with minor coughs and colds. If your child has a stomach bug they should remain off school for 48 hours from the last time they vomited to stop the spread of illness in school. If your child has a different kind of illness and you're not sure if they should be in school or not, the NHS website has lots of great advice and our office team can also help you.

Parking - please be considerate, respectful and safe if using a car to come to and from school in. Road safety is very important, as is the happiness and respect shown towards local residents.

The local authority discourages car use and parking in their inner-city schools and we do not have a car park to use. Staff parking is paid for by staff who choose to use this very small space.

Dogs, bikes and scooters - We love all of these things but our school site is a busy place with lots of young children on it. Dogs are not permitted on school site at any time, even when on a lead, so please make plans to leave them at home if you're doing the school run. Bikes and scooters should not be ridden inside the school grounds - please dismount and push them along with you.

General conduct from all adults on school property - we set high standards for this. School is private property and the local authority will act to ensure that all adults who come onto this property behave in a respectful manner. We have systems of escalation in place for those who struggle to behave respectfully on school property and will ban anyone from our site for repeated incidents of poor conduct. Please do not gather on our school site after school hours - we know we have beautiful grounds but we also have a duty to safeguard our children who attend after school clubs, closing gates and securing the site again 10 minutes after the end of the school day.
